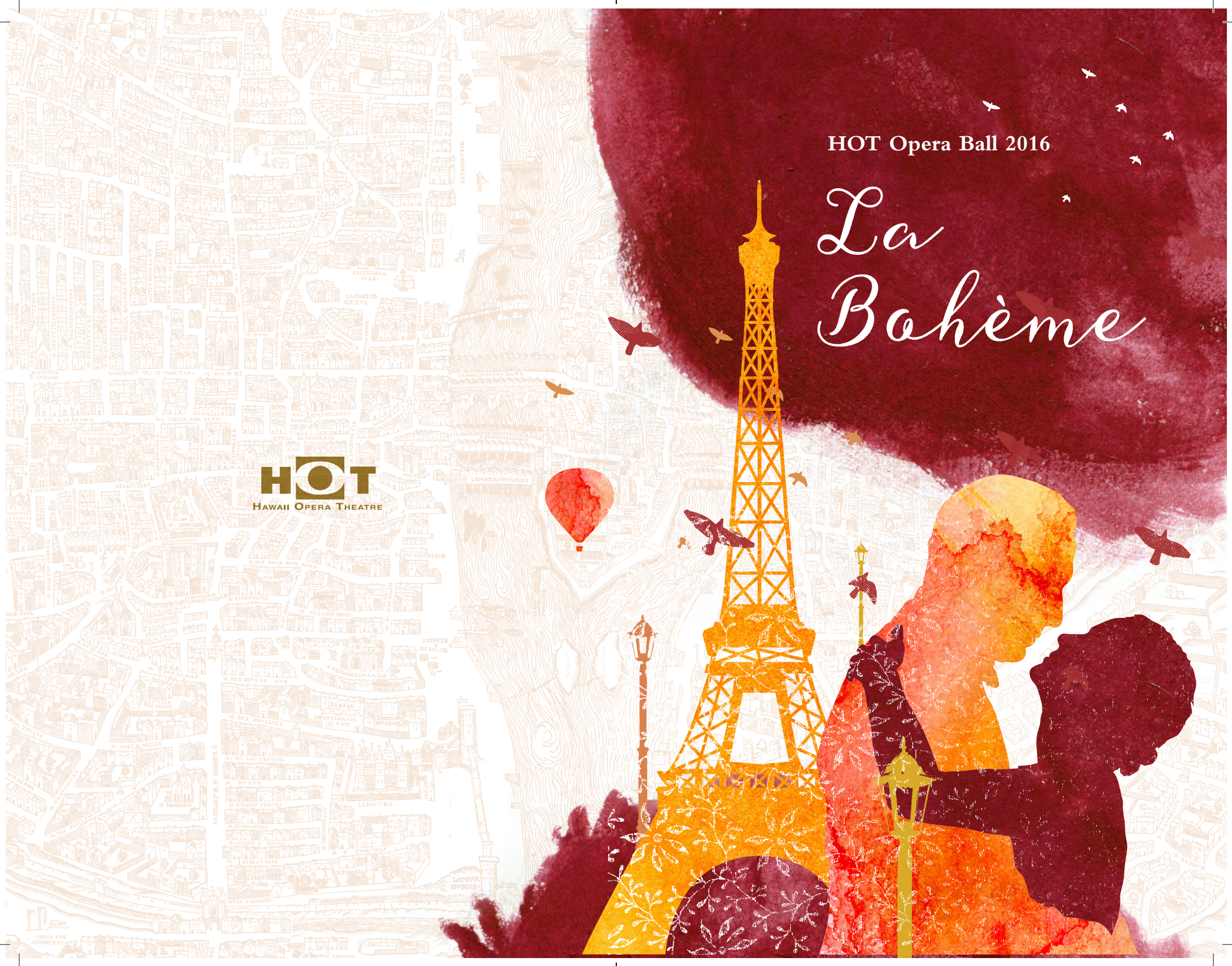


HOT Opera Ball 2016

La Bahème

HOT
HAWAII OPERA THEATRE





presents

La Bàhème

PROGRAM AND AUCTION CATALOGUE

Saturday, November 12, 2016

Sheraton Waikiki

WELCOME

Aloha and welcome to the 2016 Opera Ball – after the tremendous success of last year's event, we are delighted to be back at the Sheraton Waikiki once again!

We are so glad that you are here and very grateful for your support. Please help us to continue to bring the finest quality opera to Hawaii by supporting our Silent Auction – the more you bid the better it gets!

Thanks to a generous matching gift from Jim and Lynn Lally you will have an opportunity to help support our award-winning education programs tonight, giving around 22,000 children and their families the chance to learn about and enjoy the magical world of Opera!

This year's Opera Ball is themed after Puccini's romantic masterpiece *La Bohème*, set in the beautiful city of Paris. We hope that you were able to join us for our performances last month. And please join us for our remaining productions of the Season: Andre Previn's operatic interpretation of Tennessee Williams' *A Streetcar Named Desire*, Jake Heggie's evocative *Three Decembers*, starring the great American mezzo-soprano, Frederica von Stade, and Offenbach's popular masterpiece *Tales of Hoffmann*. And don't miss the return of the three Samoan superstars, Sol3 Mio in January.

An evening like this would not be possible without the hard work and dedication of many people. Thank you to our wonderful Opera Ball Committee, and to our fabulous Chair, Shelley Wilson, for making this year's Opera Ball such a stunning success. Thank you too, to our table hosts, our underwriters, donors and contributors, and to you all for being here! Please enjoy the party!

Henry Akina
Artistic Director

Simon Crookall
General Director

PREMIUM TABLES

RUBY

Annie Chan

Lynne Johnson and Randy Moore/Allen and Nobuko Zecha

Jim and Pam McCoy

DIAMOND

Jim and Cherye Pierce

Jean E. Rolles

PLATINUM

Elizabeth Rice Grossman

Honolulu Star-Advertiser

GOLD

John Child & Company, Inc.

David Keliikuli & Ron Bunn

Adrienne Wing & Clifford K.H. Lau

Sally Parker

Nigel & Alicia Pentland

Wilson Care Group (2)

PREMIUM TABLES

SILVER

Linn Alber/Robert & Marilyn Trankle	The MacNaughton Group
Aqua-Aston Hospitality	Neiman Marcus
Bank of Hawaii	Elahe Mir-Djalali
Lauran Bromley	Pacific Guardian Life
Central Pacific Bank	Peter & Luanna McKenney
City Mill Company, Ltd.	Steve Prieto & Rich Kennedy
First Hawaiian Bank	David and Jacquelyn Reber/ Jim Leavitt
First Insurance Company of Hawaii, Ltd.	Manning & Sarah Richards/ Steve & Ann Turner
Goodsill Anderson Quinn & Stifel	Jacqueline Takeshita
Hawaii News Now	Sheraton Waikiki
Hermes of Paris	Carolyn A. Berry Wilson
Tom Huber/Louise Emery	
Evelyn B. Lance	

BRONZE

Lea Almanza	Rodney & Sharon Kazama
Alston Hunt Floyd & Ing/Louise Ing	Ralph Kiessling/Dick Palma
Mr. & Mrs. Robert B. Bunn	KMH
Pam Andelin Cameron	Travis Knott & DJ Dole
CKW Financial Group	Leahi Swim School
Rich and Brendan Ethington	Merrill Lynch The HocuLi Group
GenHOT	Miyasaki LLC
Leslie Goldman McNerny & Tony McNerny	Monarch Insurance Company
Hawaii Pacific Health	Phil & Carol McNamee
Juli Henning/Philana Bouvier	Chris & Frank O'Brien
The Howard Hughes Corporation	Jim Tam/David Takagi
Keith Kalway	Maggie Walker
	John Michael White

UNDERWRITERS & DONORS

UNDERWRITERS

“Strike a Chord” for HOT by Jim & Lynn Lally
Dinner wine by Shelley Wilson & Kelvin Bloom

DONORS

Balenciaga
Maria Canale
Christian Dior
Keith Kalway
Terry O’Toole
United Health Alliance

PROGRAM

6:00 - 7:30

Cocktail Reception

6:00 - 9:45

Silent Auction

7:30 - 8:45

Dinner

During Dinner

HOT Presents popular operatic excerpts
from *La Bohème*, *Carmen* and *The Tales of Hoffmann*
featuring Sarah Lambert Connelly, Leslie Goldman McInerny & Buz Tennent

8:45

“Strike a Chord” for HOT

9:10 – 11:00

Dancing to Blue Light Enterprise

OPERA BALL MENU

SALADE MOMUS

May's Hydroponic Butter Lettuce

Cucumber Namasu Gelée

*Kona cold hirasasu, candied lemon, American caviar,
forbidden rice, shaved watermelon radish, Hamakua mushroom,
Big Island pickled heart of palm, tarragon mustard vinaigrette*



RODOLFO AND MIMI

Lavender Smoked Tenderloin Beef

&

Scampied Lemongrass Butterfish

*Wild mushroom pate a choux, baby Yukon baked potato, Romanesco,
balsamic pearl onion, baby beet paint, blueberry gastrique, yuzu butter sauce*



MUSETTA'S WALTZ

Eggplant Kiffir Lime Crusted Big Island Kabocha

*Watercress potato purée, Hamakua mushroom leek ragoût, garlic confit,
pomegranate gastrique, Big Island hearts of palm, garlic cream*



BOHEMIAN RHAPSODY

Mango Yuzu Mousse

Peanut Butter Crunch Bar

Strawberry meringue, vanilla marshmallow, candy mix nuts, berries

Chef Matthew Naula

*If you are requesting a vegetarian meal,
please contact Tracy Jefferson at 808-596-7372 by Wednesday, November 9*

“STRIKE A CHORD” FOR HOT EDUCATION OUTREACH

INSPIRING THE COMMUNITY WITH OPERA

HOT’s education team shares their love of opera year round. The world of opera is brought to schools and demonstrated and taught to children of all ages. Thanks to a generous offer from Jim and Lynn Lally, to match any gift up to a total of \$10,000, we can double the impact of your gift to our Education Program. Please fill out the card on your table and hand it to one of our HOT volunteers.

TOGETHER WE CAN “STRIKE A CHORD” TO BRING OPERA TO THE YOUTH OF HAWAII

HOT OPERA EXPRESS

HOT takes the show on the road to schools, libraries and other locations during the school year. This year HOT will bring Engelbert Humperdinck’s *Hansel & Gretel* to venues on Oahu and the Neighbor Islands. HOT’s Opera Express gives over 70 performances each year.

HOT RESIDENCY

This award-winning program turns a class, grade level, or even a whole school into an opera production company. With assistance from the professionals at HOT, students, faculty and staff are coached on developing their own opera or producing adaptations of famous operas and operettas.

“STRIKE A CHORD” FOR HOT EDUCATION OUTREACH

OPERA FOR EVERYONE

The final dress rehearsal for every opera is reserved for education purposes and each year educators bring thousands of students to experience live opera.

MAE Z. ORVIS OPERA STUDIO

The Studio offers young singers opportunities to work with opera professionals on the HOT staff as well as coaches and teachers from across the country to further develop their vocal and theatrical skills.

ORVIS YOUNG VOICES STUDIO

This exciting new program offers high school students the opportunity to improve their skills as performers through classes and workshops covering areas such as the voice diction, repertoire, acting, movement and more.

ENTERTAINMENT

Barcarolle from *The Tales of Hoffmann*.....Jacques Offenbach

Leslie Goldman McInerny, Giulietta

Sarah Lambert Connelly, Nicklausse

Habanera from *Carmen*.....Georges Bizet

Sarah Lambert Connelly, Carmen

Selections from Act II of *La Bohème*.....Giacomo Puccini

Leslie Goldman McInerny, Musetta

Buz Tennent, Marcello

Hawaii Youth Opera Chorus

Nola Nahulu, *Artistic Director*

Hawaii Opera Theatre Chorus

Beebe Freitas and Nola Nahulu, *Co-Directors*

Beebe Freitas, *Pianist*

Barett Hoover, *Director*

Kale Okazaki, *Stage Manager*

SILENT AUCTION POLICIES, GUIDELINES & RESTRICTIONS

The silent auction opens at 6:00 p.m. and closes at 9:45 p.m. The auction checkout station will be located in the Lanai Room and will open at 10:00 p.m.

All auction items must be paid for this evening by cash, check, American Express, Visa, MasterCard or Discover and are subject to Hawaii General Excise Tax (4.712%).

All sales are final. No exchanges or refunds on auction items will be allowed unless indicated. All items must be claimed the night of the auction unless size or quantity prevents their removal, per approval by HOT staff. Any arrangements and expense for delivery are the sole responsibility of the winning bidder. Any item not picked up from Hawaii Opera Theatre's office by January 13, 2017 will be considered a donation back to Hawaii Opera Theatre.

BUY NOW items must be paid for immediately at the cashier's table. The cashier's table will open at 6:00 p.m. for BUY NOW items.

Each item is auctioned "as-is" without warranty. Values assigned to some items being auctioned are estimates only. Items are not guaranteed by Hawaii Opera Theatre, which makes no representation of any kind, expressed or implied, with respect to any items offered at this auction. Hawaii Opera Theatre reserves the right to withdraw any items from sale prior to the call for bids.

A bid sheet is displayed with each silent auction item. All items are subject to a minimum starting bid and bid increment. A bid is entered by legibly completing the bid sheet with your bidder number, name and phone number. Illegible and incomplete bids not meeting the stated minimum increment will be considered invalid and will be voided. The highest bid at closing time constitutes the winning bid. In the event of a dispute, the Silent Auction Chairman will determine the winning bid.

All auction items are subject to expiration, restrictions, deadlines and blackout dates as indicated. If no expiration is indicated, the expiration date is November 12, 2017. The winning bidder is responsible for contacting the service provider to make arrangements or to validate the award as indicated.

Reservations for trips, hotels, vacation homes, private parties, etc. must be made following the restrictions listed in the promotion of the item and on the gift certificate.

Have fun bidding and know that each dollar you donate helps bring opera to Hawaii!

BUY NOW GUIDELINES

Many of the items in our Silent Auction can be purchased immediately if you pay the BUY NOW price. All of our wines will have BUY NOW prices so you may share them with your friends during dinner at the Opera Ball.

Just follow these simple steps:

- Look for the highlighted BUY NOW price and signature line at the bottom of the bid sheet.
- Simply sign your name by the BUY NOW price and the item will be yours!
- Notify an auction volunteer to escort you with your purchase(s) for early checkout.

The cashier's table for the BUY NOW program will open at 6:00 p.m.

WINE

PERFECT PACKAGES

- 101 Magnum of Magnificat Chianti Anima Mea Domus 2011, Bottle #180, 2013 Casanova Reserva Chianti, 2013 Saint Agnese Merlot**
Elizabeth Grossman Value: \$400
- 102 2013 Jacqueline Greystone Vineyard Chardonnay (12 bottles)**
Jackie Takeshita Value: \$340
- 103 Turley “Frederick’s Vineyard” Zinfandel Vertical 2008, 2009, 2010, 2011**
Leonard Chow Value: \$275
- 104 1994 Joseph Phelps Cabernet Sauvignon, 1995 Burgess Cabernet Sauvignon (2 bottles)**
Jim and Marilyn Pappas Value: \$200
- 105 1994 Joseph Phelps Cabernet Sauvignon (2 bottles) 1995 Burgess Cabernet Sauvignon**
Jim and Marilyn Pappas Value: \$210
- 106 1998 Jordan Cabernet Sauvignon, 2001 Franciscan Cabernet Sauvignon (2 bottles)**
Jim and Marilyn Pappas Value: \$200
- 107 1998 Jordan Cabernet Sauvignon (2 bottles) 2001 Franciscan Cabernet Sauvignon**
Jim and Marilyn Pappas Value: \$210
- 108 Rafanelli Zinfandel Vertical 2010, 2011, 2012, 2013**
James L. Redmond Value: \$200
- 109 2013 Grgich Hills Cabernet Sauvignon 2013 Chalk Hill Estate**
Luanna and Peter McKenney Value: \$115
- 110 2014 The Prisoner Red Wine (2 bottles)**
Roger and Joyce Lerud
Kelvin Bloom and Shelley Wilson Value: \$100

- 111 2010 Las Compuertas Terrazas Single Vineyard**
David and Bonnie Andrew
2012 Trinchero Napa Valley Cabernet Sauvignon
Fujioka's Wine Times Value: \$100
- 112 2013 Faust Cabernet Sauvignon (2 bottles)**
Anne Namba Designs Value: \$100
- 113 2010 Clos du Val Reserve Pinot Noir**
Susan and Marty Fritz
2013 Roar Pinot Noir Appellation Santa Lucia Highlands
Fujioka's Wine Times
Decoy Sonoma Pinot Noir
Kelvin Bloom and Shelley Wilson Value: \$136
- 114 Case of Korbel Champagne (12 bottles)**
Anonymous Value: \$120
- 115 2012 Stag's Leap Merlot**
Russell Tom
2013 Shafer Merlot Napa
Glenn Pang MD Value: \$110
- 116 2013 Stag's Leap Artemis Cabernet Sauvignon**
Roger and Felice Brault
2012 Oak Farm Cabernet Sauvignon
Stephen and Dana Wilson Value: \$95
- 117 2007 Chateau St. Michelle Indian Wells Merlot**
2013 Whitehall Lane Merlot
Kelvin Bloom and Shelley Wilson Value: \$76
- 118 2011 Amelie Robert Oregon Syrah**
Fujioka's Wine Times
2008 Thierry and Guy Fat Bastard Shiraz
Kelvin Bloom and Shelley Wilson Value: \$50

REDS from the AMERICAS

- 119 2011 Harlan Estate Red**
Al and Joyce Tomonari Value: \$750

120	2011 Colgin IX Estate Red <i>Dr. Darrell and Cathy Lee</i>	Value: \$500
121	2006 Hundred Acre Kayli Morgan Cabernet Sauvignon <i>Dr. S. James Lee</i>	Value: \$450
122	2002 Grace Family Cabernet (1 liter) etched bottle with box <i>Dr. Darrell and Cathy Lee</i>	Value: \$400
123	2002 Verite 'La Joie' Proprietary Red <i>George and Cheryl Hetherington</i>	Value: \$350
124	2011 Shafer Hillside Select <i>George and Cheryl Hetherington</i>	Value: \$350
125	2009 Opus One <i>Steve and Ann Turner</i>	Value: \$350
126	2013 Schrader LPV Cabernet Sauvignon <i>Reid and Traci Takamoto</i>	Value: \$350
127	2003 Colgin IX Estate Red <i>Dr. Rob Wong</i>	Value: \$350
128	2005 Shafer Hillside Select <i>Dr. Rob Wong</i>	Value \$300
129	2008 Modus Operandi Vicarious Cabernet Sauvignon (3 liter) <i>Modus Operandi</i>	Value: \$300
130	2013 Peter Michael "Les Pavot" <i>Dean and Jodi Yamamoto</i>	Value: \$220
131	2013 Peter Michael "Les Pavot" <i>Dean and Jodi Yamamoto</i>	Value: \$220
132	2008 Quilceda Creek Cabernet Sauvignon <i>Dr. Sid and Susan Lee</i>	Value: \$200
133	2011 Miner "The Oracle" Cabernet Sauvignon (Magnum) <i>Young's Market Company</i>	Value: \$190

134	2012 Spottswood Cabernet Sauvignon <i>Cherye and Jim Pierce</i>	Value: \$175
135	2008 Rudd Oakville Estate Red <i>Dean and Jodi Yamamoto</i>	Value: \$175
136	2013 Kosta Browne Gap's Crown Vineyard <i>Reid and Traci Takamoto</i>	Value: \$175
137	2013 Pahlmeyer Proprietary Red signed by Jason Pahlmeyer <i>Jason Pahlmeyer</i>	Value: \$160
138	2013 Lewis Reserve Cabernet Sauvignon <i>Buzz and Kitty Wo</i>	Value: \$160
139	2013 Kistler Sonoma Coast Pinot Noir <i>Buzz and Kitty Wo</i>	Value: \$150
140	2008 Quilceda Creek Galatzine Cabernet Sauvignon <i>Dr. S. James Lee</i>	Value: \$150
141	2004 Ovid Experiment E04 Red Blend <i>Russel Moore</i>	Value: \$130
142	2012 Sea Smoke "Ten" Pinot Noir <i>Jim Clark</i>	Value: \$130
143	2012 Duckhorn Rector Creek Cabernet Sauvignon <i>Janet and Eric Weyenberg</i>	Value: \$125
144	2010 Stag's Leap "The Leap" Cabernet Sauvignon <i>Peter Shaindlin</i>	Value: \$120
145	Overture by Opus One (NV) <i>Abhilasha and Vikram Garg</i>	Value: \$120
146	2003 David Arthur Estate Cabernet Sauvignon <i>Steve Debiase</i>	Value: \$110
147	2013 Turkey Hayne Vineyard Zinfandel <i>Mr. and Mrs. Kevin Sakamoto</i>	Value: \$110

- | | | |
|-----|--|--------------|
| 148 | 2013 Saunter Eagle Summit Vineyard Cabernet Sauvignon
<i>John Doty</i> | Value: \$110 |
| 149 | 2009 Cakebread Cellars Napa Cabernet Sauvignon
Signed by Dennis Cakebread
<i>Kelvin Bloom and Shelley Wilson</i> | Value: \$108 |
| 150 | 2013 Prisoner Red Blend (Magnum)
<i>James Beaumont</i> | Value: \$105 |
| 151 | 2013 Shafer One Point Five Cabernet Sauvignon
<i>Mr. and Mrs. Kevin Sakamoto</i> | Value: \$100 |
| 152 | 2009 Peter Michael “L’Esprit Des Pavot”
<i>Vernon Wong</i> | Value: \$100 |
| 153 | 2012 Morlet Le Petits Cabernet Sauvignon
<i>Vernon Wong</i> | Value: \$100 |
| 154 | 1991 Silver Oak Cabernet Sauvignon Alexander Valley
<i>Richard S.H. Wong</i> | Value: \$100 |
| 155 | 2012 Miner “The Oracle” Napa Red
<i>Kelvin Bloom and Shelley Wilson</i> | Value: \$98 |
| 156 | 2008 Viader Red Blend
<i>Cherye and Jim Pierce</i> | Value: \$85 |
| 157 | 2011 J. Moss Coombsville Cabernet Sauvignon
<i>James Moss</i> | Value: \$84 |
| 158 | 1996 Terraces Napa Valley Zinfandel
<i>Kelvin Bloom and Shelley Wilson</i> | Value: \$80 |
| 159 | 2012 Silver Oak Alexander Cabernet Sauvignon
<i>Doran Chavez</i> | Value: \$75 |
| 160 | 2013 Donum Pinot Noir
<i>Blenn Fujimoto</i> | Value: \$75 |
| 161 | 2012 Turley Cabernet Sauvignon
<i>Blenn Fujimoto</i> | Value: \$70 |

- | | | |
|-----|---|-------------|
| 162 | 2012 Chateau St. Jean “Cinq Cepages” Red Wine
<i>Guy Merola and Mark Wong</i> | Value: \$70 |
| 163 | 2013 Stag’s Leap Artemis Cabernet Sauvignon
<i>Benjamin and Christine Komer</i> | Value: \$70 |
| 164 | 2007 Antica Cabernet Sauvignon
<i>Michael Monroe</i> | Value: \$70 |
| 165 | 2013 Venge Silencieux Cabernet Sauvignon
<i>Neva Rego and Betty Grierson</i> | Value: \$65 |
| 166 | 2007 Terlato Cardinals’ Peak Cabernet Sauvignon
<i>Robert and Marita Bonham</i> | Value: \$65 |
| 167 | 2012 Duckhorn Cabernet Sauvignon
<i>Susan Palmore</i> | Value: \$65 |
| 168 | 2012 Jordan Cabernet Sauvignon, Sonoma
<i>Glenn Pang, MD</i>
2010 Kenwood Cabernet Sauvignon
<i>Peter Carlisle</i> | Value: \$80 |

REDS from EUROPE

- | | | |
|-----|--|--------------|
| 169 | 2003 Chateau Pavie, St. Émilion
<i>Eric Fleischer</i> | Value: \$300 |
| 170 | 2011 Tenuta dell ‘Ornellaia’ Bordeaux Blend
<i>Buzz and Kitty Wo</i> | Value: \$230 |
| 171 | 1986 Chateau Ducru Beaucallou
<i>Dr. Darrell and Cathy Lee</i> | Value: \$200 |
| 172 | 1996 Chateau Lynch-Bages, Pauillac Grand Cru Classe
<i>Richard S.H. Wong</i> | Value: \$170 |
| 173 | 2008 Chateau Rauzan Segla
<i>Peter Shaindlin and Juli Henning</i> | Value: \$110 |

- | | | |
|-----|--|--------------|
| 174 | 2007 Bibi Graetz Testamatta Toscana
<i>Karl and Megumi Essig</i> | Value: \$100 |
| 175 | 2006 Chateau Latour Le Pauillac de Latour
<i>Michael Monroe</i> | Value: \$85 |
| 176 | 2008 Tenuta Sette Ponti 'Oreno' Toscano
<i>Gerald Dar</i> | Value: \$80 |
| 177 | Los Vascos Domaines Baron de Rothschilds Cabernet Sauvignon
<i>Kelvin Bloom and Shelley Wilson</i> | Value: \$70 |
| 178 | 2012 Vietti Barolo Castiglione
<i>Benjamin and Christine Komer</i> | Value: \$60 |
| 179 | 2007 Cesari Amarone della Valpolicella
<i>Evelyn Lance</i> | Value: \$55 |
| 180 | 2012 Shatter Grenache by Orin Swift (Magnum))
<i>Young's Market Company</i> | Value: \$52 |
| 181 | 2012 Shatter Grenache by Orin Swift (Magnum)
<i>Young's Market Company</i> | Value: \$52 |
| 182 | Tenuta delle Terra Nere
<i>Karl and Megumi Essig</i>
2012 Terra Calcinara Conero
<i>Stephen and Dana Wilson</i> | Value: \$70 |

CHAMPAGNES and WHITES

- | | | |
|-----|---|--------------|
| 183 | 2001 Chateau d'Yquem Sauterne (375 ml)
<i>Diane Chen and Jan Koch-Weser</i> | Value: \$365 |
| 184 | 2000 Krug Champagne
<i>Ash and Kimi J. Matar</i> | Value: \$300 |
| 185 | 2003 Jadot Chevalier Montrachet Demoiselles
<i>Dr. Sid and Susan Lee</i> | Value: \$300 |

- | | | |
|-----|---|--------------|
| 186 | 2002 Dom Ruinart Champagne
<i>Dr. Sid and Susan Lee</i> | Value: \$185 |
| 187 | 2004 Dom Perignon Champagne
<i>Buzz and Kitty Wo</i> | Value: \$185 |
| 188 | Bollinger Special Cuvee NV
<i>Young's Market Company</i> | Value: \$150 |
| 189 | 2011 Aubert Sonoma Chardonnay
<i>Reid and Traci Takamoto</i> | Value: \$120 |
| 190 | William Fevre Premier Cru Chablis Montmains
<i>Kelvin Bloom and Shelley Wilson</i> | Value: \$90 |
| 191 | Ayala Brut Majuer NV
<i>Young's Market Company</i> | Value: \$85 |
| 192 | Veuve Clicquot Champagne NV
<i>Stephen and Dana Wilson</i> | Value: \$50 |
| 193 | 2009 Cakebread Cellars Napa Chardonnay
2008 Kendall-Jackson Grand Reserve Chardonnay
<i>Kelvin Bloom and Shelley Wilson</i> | Value: \$87 |

FORTIFIED WINES

- | | | |
|-----|---|-------------|
| 194 | 1970 Graham's Vintage Port
<i>Mitch Kysar</i> | Value: \$25 |
|-----|---|-------------|

SPIRITS

- | | | |
|-----|--|--------------|
| 195 | Personalized Maker's Mark Bottle
Hand-etched Maker's Mark bourbon bottle featuring the buyer's or buyers' chosen assigned recipient's portrait image, engraved at the distillery by Maker's Mark's artisan. Buyer must provide high resolution image of recipient to donors
<i>Peter Shaindlin and Juli Henning</i> | Value: \$750 |
|-----|--|--------------|

- 201 Esther Shimazu**
Small standing male nude with cat, porcelain, 7 x 4 x 5 Price: \$600
- 202 Vicky Chock**
Bird Watching in India, boy on an elephant, clay sculpture,
 9 x 11 x 3 Price: \$1600
- 203 Mary Mitsuda**
Blossom, acrylic on panel, 10 x 10 Price: \$600
- 204 Allyn Bromley**
Chain Xen Queen, for HOT is an Opera Ball exclusive. A colored
 pencil drawing from the artist's botanical series, 10 x 10
Allyn Bromley Price: \$1200
- 205 Pam Andelin**
 Information to come
- 206 Anne Irons**
 Information to come

All work is listed in inches H x W x D

- 301 Saks Fifth Avenue Beauty Extravaganza**
A basket with Issey Miyaki BaoBao bag, a Saks exclusive, plus treat yourself to an Estée Lauder master class for six people on skincare with champagne, followed by a catered lunch in our Fifth Avenue Club. Host will also receive a private facial prior to the master class. Host will receive a \$100 gift certificate and each guest will receive a \$25 gift certificate towards Estée Lauder beauty purchase
Saks Fifth Avenue Value: \$4000
- 302 Private Tour of the LOUIS VUITTON Fondation in Paris France**
Entrance to and private tour of the spectacular LOUIS VUITTON Fondation by architect Frank Gehry for up to six guests. Tour to be taken in 2017 with date to be arranged and mutually agreed upon by all parties
LOUIS VUITTON Value: Priceless
- 303 Balenciaga**
Rose python Papier Zip Around handbag. May not be returned or exchanged
Balenciaga Value: \$2950
- 304 Versace**
The Athena from Versace “Vanitas Collection”, is a chic city top-handle bag, Barocco quilted nappa leather with a zip-top closure, Barocco printed lining, internal zip and pouch pockets, detachable shoulder strap, and with its enameled Medusa charm. May not be returned or exchanged
VERSACE Value: \$2675
- 305 Christian Louboutin**
The Eloise small two handle bag is both a beautiful and functional structured day bag, with shopper handles featuring signature spikes and plenty of storage. May not be returned or exchanged
Christian Louboutin Value: \$1750
- 306 CH Carolina Herrera Exclusive Shopping Experience**
\$1,500 CH Experience gift certificate for you and a VIP reception for you and five friends to have in the store
CH Carolina Herrera Value: \$1500

- 307 Burberry**
Burberry Bridle House Check Small Orchard Bowling handbag in dark tan. May not be returned or exchanged
DFS Group L.P. Hawaii Value: \$1395
- 308 Diane von Furstenberg Gift Certificate and Shopping Party**
Treat yourself to a \$500 gift card and a private shopping party for you and your friends at Diane von Furstenberg's Honolulu boutique. The gift certificate must be redeemed in full in one visit and must be redeemed within one year of purchase. Shopping spree must be completed within the shop's normal business hours or at a mutually agreed upon time
Diane von Furstenberg Value: \$800
- 309 Lanvin Sunglasses**
Very modern black acrylic sunglasses with gunmetal and crystal embellishments. Made in Italy
HI-Trend Hawaii Value: \$525
- 310 Anteprima**
Glitter MISC USA. This fun bag is made with PVC, plastic bead, glass rhinestones, nappa leather, chrome plated iron ornaments with crystal stones. May not be returned or exchanged
Anteprima Value: \$585
- 311 Givenchy Sunglasses**
Black modern aviator style sunglasses by luxury and renowned brand Givenchy. Made in Italy
HI-Trend Hawaii Value: \$465
- 312 Ted Baker**
Ted Baker London Tote. May not be returned or exchanged
Ted Baker London Value: \$279
- 313 David Yurman**
A beautiful sterling silver and 14 karat bonded yellow gold pendant on a box chain from the Crossover Collection
David Yurman Value: \$975
- 314 Tiffany & Co.**
Graphic angles and clean lines blend to create the beautiful clarity of the Tiffany T Collection. Simple and elegant, this curved pendant embodies a timeless aesthetic
Tiffany & Co. Value: \$295

401 BMW European Drive

The ultimate BMW Lifestyle experience begins when you arrive in Munich at the BMW Welt – home to the BMW Group headquarters, plant and museum. Pick up your BMW 328i for your personal use to drive across Europe for 14 days. Offer includes option to drop off car at eight drop off locations, except Saturday, Sunday and holidays. Includes insurance. Valid U.S. driver's license and passport required. Availability of selected model not guaranteed. Two months' advance notification required

BMW of Honolulu

Value: \$2500

402 Alaska Airlines

Two roundtrip Coach Class, Systemwide Airline Travel Voucher tickets on Alaska Airlines. The transportation is unrestricted, good on Alaska Airlines and/or Horizon Air. No blackout dates apply

Alaska Airlines

Value: \$2800

403 The Spencer on Byron, Auckland, New Zealand

Enjoy a seven-night stay in a one-bedroom Spencer Suite at The Spencer on Byron Hotel in Takapona, Auckland, New Zealand. Valid until 11/30/17. Reservations accepted within 90 days prior to arrival. Accommodations based on availability and blackout dates apply. Resort fee, reservation processing fee and cleaning fee may apply

Castle Resorts

Value: \$2450

404 W South Beach

Three-night stay in a wonderful studio at the W South Beach in Miami Beach, FL. Space is limited and blackout dates apply. Please make reservations no later than 10 days prior to arrival date. Guests are responsible for incidental charges not listed as an amenity

W South Beach

Value: \$1000

405 Sheraton San Diego Hotel and Marina

Complimentary two-night stay for two at the Sheraton San Diego Hotel and Marina. Valid through 11/30/17. Reservation is based on space availability

Sheraton San Diego Hotel and Marina

Value: \$600

406 Island Air

Two round-trip air tickets

Nella Media Group

Value: \$500

407 Mokulele Air

Two round-trip air tickets

Nella Media Group

Value: \$500

408 Halekulani

Two-night stay for two in a luxury suite, based on space availability. Fifty-minute spa experience for two and a three course dinner for two at Orchids (inclusive of non-alcoholic beverage)

Halekulani

Value: \$5500

409 A Week at Malaekahana Beach

Arrive on Monday afternoon for a relaxing week overlooking the ocean. Three bedrooms, two and a half baths, full kitchen, decks facing ocean and lawn. Not available Thanksgiving or Christmas. Dates to be arranged with owners

Carol, Robin, Andrew and Katie Bunn

Value: \$3045

410 Four Seasons Ko Olina

Two-night stay in an oceanfront room with daily breakfast buffet for two people at La Hiki. Valid through 11/30/17

Four Seasons Ko Olina

Value: \$2570

411 Sheraton Waikiki

Oceanfront accommodations for two nights at the Sheraton Waikiki Resort. Includes resort charge. Not valid on holidays

Sheraton Waikiki

Value: \$1800

412 Moana Surfrider, A Westin Resort & Spa

A two-night stay in deluxe ocean view accommodations. Includes resort charge

Moana Surfrider

Value: \$1560

413 Turtle Bay Resort

Two-night stay in an ocean view room and dinner for two at the Pa'akai Restaurant. Room rate and room taxes are complimentary. Current resort fee plus applicable resort fee tax will be applied to the final bill. Reservations are subject to availability and must be made in advance; certain blackout dates may apply. Restaurant certificate includes gratuity and tax, does not include alcoholic beverages. Restaurant certificate value is \$150 and is not applicable on holidays or special events

Turtle Bay Resort

Value: \$1150

414 Aqua-Aston SurfJack Hotel & Swim Club

Two-night stay at the all new Surfjack Hotel & Swim Club in Waikiki

Aqua-Aston Hospitality, LLC

Value: \$1135

415 Aulani, a Disney Resort & Spa in Ko Olina

A two-night stay in an island garden view room. Dates are subject to availability. Valid through 10/31/17

Aulani

Value: \$1025

416 The Royal Hawaiian, a Luxury Collection Resort

Two-night stay in an historic garden room. Not valid on holidays.

Reservations subject to availability and blackout dates may apply. Based on single/double occupancy

The Royal Hawaiian, a Luxury Collection Resort

Value: \$850

417 Sheraton Princess Kaiulani

Two-night stay in a high ocean view room. Not valid on holidays. Blackout dates may apply

Sheraton Princess Kaiulani

Value: \$500

418 Montage Kapalua

Two-night stay in a one-bedroom garden view residence at Montage Kapalua Bay, including room & tax, excluding resort charge and overnight parking. Blackout dates apply

Montage Kapalua

Value: \$3400

419 Sheraton Maui Resort

Two nights' accommodations. The Sheraton Maui Resort overlooks the pristine Ka'anapali Beach with breathtaking views of Molokai and Lanai

Sheraton Maui Resort

Value: \$1370

420 The Westin Ka'anapali

Two-night stay in a studio, island view villa. Valid though 11/30/17

The Westin Kaanapali

Value: \$1340

421 Aqua-Aston Papakea Resort Maui

Two-night stay at the Papakea Resort on the island of Maui

Aqua-Aston Hospitality, LLC

Value: \$1145

422 Koali Ranch Cottage

Enjoy spectacular views during your two-night stay at this cozy cottage near Hana

Chuck Gray

Value: \$450

423 Westin Princeville

One complimentary premium island view studio villa for two nights on Kauai's breathtaking North Shore, based on double accommodations and space availability

Westin Princeville

Value: \$2100

424 Sheraton Kauai

Two-night stay in an oceanfront room. Not valid on holidays, does not include alcoholic beverages or gratuity in restaurants

Sheraton Kauai

Value: \$1580

425 Poipu Shores

Two-night stay in a two-bedroom oceanfront condominium at Poipu Shores. Valid until 11/30/17. Reservations accepted within 90 days prior to arrival. Accommodations based on availability and blackout dates apply. Resort fee, reservation processing fee and cleaning fee may apply. Food, beverages and gratuities not included

Castle Resorts

Value: \$850

426 The Modern

Two-night stay in an ocean view room includes Dinner for 2 at the Grove Restaurant and Bar

The Modern

Value: \$1675

427 Trump International

Two-night stay in a deluxe two-bedroom ocean view suite. Subject to availability. Blackout dates apply. Does not include taxes

Trump International Waikiki Beach Walk

Value: \$3417

JEWELRY AND ACCESSORIES

501 **Sapphire Bracelet**

Square multicolored sapphires, 7.0 ct total weight and 160 diamonds, 0.80 total weight set in 14 karat white gold

WGM, Inc.

Value: \$4000

502 **Sapphire Ring**

Square multicolored sapphires, 2.5 ct total weight and 26 diamonds, 0.13 total weight set in 14 karat white gold, size 8

WGM, Inc.

Value: \$950

503 **Multicolored Sapphire Pendant**

Square multicolored sapphires, 0.80 ct total weight and 26 diamonds, 0.13 total weight set in 14 karat white gold

WGM, Inc.

Value: \$900

504 **Maui Divers Jewelry**

Inspired, designed and created by hand in Hawaii. Take home a \$500 gift certificate and purchase something beautiful from Hawaii's largest jewelry selection at Maui Divers Jewelry Design Center at 1520 Liona Street

Maui Divers of Hawaii

Value: \$500

505 **Swarovski Necklace and Earrings**

Swarovski large and small stone choker and a pair of round and a pair of square stone earrings

Clifford & Adrienne Lau

Value: \$500

506 **Amazonite and Fresh Water Pearl Necklace**

62-inch necklace with amazonite and Chinese fresh water pearls

The Meng Dynasty

Value: \$270

507 **CZ Canary "Diamond" Ring**

Approximately 3 ct. emerald cut canary "diamond" CZ set in 14kt yellow gold accented by small sparkling "diamond" colored cz stones

Linn Sol Alber

Value: \$225

508 **Vintage Brooch & Earrings circa 1960s**

Perfect for the holidays, this Delizza & Elster aurora borealis rhinestone brooch and matching earrings features bright red glass dangles accented with small dark red rhinestone. D & E jewelry was never marked but it is identified by collectors by its construction

Linn Sol Alber

Value: \$125

- 509 1940s Vintage Coro “Duette”**
 Separable enamel and rhinestone brooch that can be worn as fur clips or together as a pin. Patented #151364 in 1948. The design is known as “Apple Blossom”
Linn Sol Alber Value: \$225
- 510 Evening Bag**
 Rhinestone evening bag
Anonymous Value: \$125
- 511 Silver Bracelet**
 Sterling silver cuff made in Mexico by Tane, the Mexican luxury silversmith and jeweler
Cherye Pierce Value: \$250
- 512 Gold and Crystal Necklace**
 An original four strand necklace of gold and crystal beads by Bertie Lee
Bertie Lee Value: \$200
- 513 Pearl Bangle**
 Black pearls on gold wire
Riches Kahala Value: \$140
- 514 Zahn Necklace**
 Contemporary fashion necklace from Zahn
Riches Kahala Value: \$120
- 515 Hammered Sterling Cuff**
 2 ½-inch hand fabricated sterling cuff
Debby and Bob Atkinson Value: \$300
- 516 Pandora Charm Bracelet**
 Silver Pandora charm bracelet with light pink rose charm
Anonymous Value: \$85
- 517 MINGS Gold Necklace**
 Authentic MINGS double strand gold necklace 24” signed
Hawaii Estate & Jewelry Buyers Value: \$2800-\$4500
- 518 Golden South Sea Pearl Necklace**
 20mm large golden south sea pearl, 1.5ctw diamonds
Hawaii Estate & Jewelry Buyers Value: \$6800-\$11,000

- 519 Jade Bangle**
Rare item multi-color natural no impregnation jade bangle circa 1950s
Hawaii Estate & Jewelry Buyers Value: \$11,000-\$18,000
- 520 Victorian Bangles**
Set of two Victorian silver mesh work and coral bangles
Hawaii Estate & Jewelry Buyers Value: \$3500-\$5900
- 521 Victorian Leafwork Brooch and Earrings**
Vintage brooch and earring set, meticulous gold work, natural sapphires.
Brooch can be worn as a pendent
Hawaii Estate & Jewelry Buyers Value: \$2400-\$4800
- 522 Ruby Ring**
Large ruby, approximately 6ct, GIA certified set in large 18k white gold ring with 3ctw of diamonds, circa 1960
Hawaii Estate & Jewelry Buyers Value: \$8000-\$16,000
- 523 Australian Opal Ring**
Large yellow gold Australian opal blue pear shape ring approximately 8.34 ct with 1 ct of diamonds
Hawaii Estate & Jewelry Buyers Value: \$3500-\$5500
- 524 Ring with Ice Jade Center**
Handmade rose gold ring with micro pave diamond encasing a rare ice jade center stone
Hawaii Estate & Jewelry Buyers Value: \$3500-\$5900
- 525 1890s Chandelier Diamond Earrings**
Antique chandelier-style earrings crafted of platinum with old mine cut diamonds. A rare find for the antique collector
Hawaii Estate & Jewelry Buyers Value: \$5200-\$9000
- 526 GUMPS Angel Skin Bead Necklace**
Authentic GUMP'S angel skin bead necklace, circa 1960s
Hawaii Estate & Jewelry Buyers Value: \$4300-\$7400
- 527 Apple Green Jade Ring**
Lady's white gold ring, apple green navette shaped jade with graduated diamonds vvs clarity, rare and large, jade not treated, circa 1950s
Hawaii Estate & Jewelry Buyers Value: \$6500-\$9500

- 528 Art Deco Diamond Bracelet**
 Lady's unique platinum art deco diamond bracelet containing 160 old European cut diamonds F in color VS2 in clarity totaling 8.6ctw, circa 1920s, origin Europe
Hawaii Estate & Jewelry Buyers Value: \$18,000-\$28,000
- 529 HAMILTON 1940s Platinum Watch**
 Platinum and diamond watch with diamonds through the band. Extra links are available
Hawaii Estate & Jewelry Buyers Value: \$4500-\$7000
- 530 Diamond Double Hoop Earrings**
 Double hoop diamond earrings, 1.2ctw, diamonds are f color and vs in clarity
Hawaii Estate & Jewelry Buyers Value: \$2900-\$4800
- 531 Purple Red Sapphire**
 Extremely rare no heat GIA certified purple red sapphire, center stone 4.86ct. flawless quality diamonds 2.56ctw vvs clarity. Ring can be resized
Hawaii Estate & Jewelry Buyers Value: \$14,000-\$27,000
- 532 Diamond Snake Platinum Ring**
 3.5ctw snake motif lady's platinum ring, the body has 2.83 ctw of vvs diamonds and the head is a marvelous .70ct pear shape diamonds
Hawaii Estate & Jewelry Buyers Value: \$6800-\$8900
- 533 H. STERN Multi-Color Gem Necklace**
 H.STERN, Brazil circa 1960 multi-color gems (peridot, citrin, aquamarine and more) yellow gold necklace, rare and elegant
Hawaii Estate & Jewelry Buyers Value: \$5000-\$8700
- 534 White and Black Diamond Ring**
 White and black diamond pave trio ring, weighs 2ctw. Ring can be resized
Hawaii Estate & Jewelry Buyers Value: \$3800-\$4900
- 535 Diamond Ring**
 Impressive 3.51ct split shank diamond ring, center stone is a round brilliant h color an I clean in clarity, the total ctw for the ring is over 4cts
Hawaii Estate & Jewelry Buyers Value: \$18,000-\$37,000
- 536 Men's Black Star Sapphire Ring**
 Large men's black star sapphire and diamond ring. Heavy 14k yellow gold
Hawaii Estate & Jewelry Buyers Value: \$2500-\$4900

537 White Jade Necklace

Extremely rare white jade (mutton fat jade) large talisman with yellow gold chain and bead work over 300 years old. Investment grade

Hawaii Estate & Jewelry Buyers

Value: \$9800-\$20,000

538 Men's Rolex Watch

Stainless steel roman dial men's Rolex oyster watch with fluted bezel, circa 2002. Box and papers included

Hawaii Estate & Jewelry Buyers

Value: \$5500-\$8700

539 Gold Choker

Heavy 18k Italian-made weave-style lady's gold choker

Hawaii Estate & Jewelry Buyers

Value: \$3800-\$6000

540 Gold Dimple Necklace

14k yellow gold necklace featuring deep concave dimples with carved onyx and a 2.78 rubelite. The piece was hand made by Steven Walters

Hawaii Estate & Jewelry Buyers

Value: \$3500-\$9500

EXPERIENCES

601 Hawaii Five-O

You and a guest will be taken behind the scenes on a private tour of the exciting Hawaii Five-0 set. Experience all of the action and drama as the cast and crew film this amazing television show. Date to be mutually agreed upon. Valid week days only and cannot be used while on filming hiatus between 12/16/16 – 1/4/17 or 4/5/17 – 6/15/17. Individuals under the age of 18 must be accompanied by an adult

Hawaii Five-0

Value: Priceless

602 Hawaiian Music, Song and Story with Puamana

One hour of Hawaiian music, song and story as Puamana sings and plays favorite island songs for your next festive gathering. Reservations by mutual agreement. Available Monday through Thursday. Friday and Sunday until 5 p.m. Not available on Saturdays or all holidays

Puamana

Value: \$500

603 Jazz Performance by DRIFT

Experience the intense poetic musical intimacy of DRIFT, Honolulu's progressive "savant-garde" jazz-influenced quartet in a 90-minute jazz musical performance. Date to be arranged and mutually agreed upon by both parties. Valid until 12/31/17

DRIFT

Value: \$600

604 San Francisco Opera

Voucher for a pair of tickets to a performance of the San Francisco Opera during the 2016-2017 season. To be used on a weekday (Monday-Thursday) evening only. Season runs from September 13, 2016 to June 29, 2017

San Francisco Opera/ Mark Sackett, Box Office Manager

Value: \$214

605 Supercar Experience

Calling all car enthusiasts. You'll experience the thrill and excitement of some of the world's most iconic cars – an Aston Martin DB9, McLaren MP4-12C and one of the most famous supercars of all, the (1200HP) Ford GT40. As you ride in each vehicle, Kelvin will share some of his experiences as both a former professional motocross racer and current auto racer. Date to be arranged and mutually agreed upon by both parties

Kelvin Bloom

Value: Priceless

606 Yachting

You and five of your friends will enjoy a three-hour sunset cruise aboard the beautifully appointed Vanessa. Date to be agreed upon by both parties
Bill Deucher Value: Priceless

607 Pedego Electric Bike

Experience the wind in your face when you ride around town in style and comfort with this beautiful and functional electric bicycle. Conveniently switch between pedal assist and electric modes with a state-of-the-art geared motor. Bicycle comes with charger and accessory kit
Pedego Bikes Value: \$2700

608 A Superstar Evening

Enjoy dinner and wine pairings for twelve guests prepared by the one and only Chef Vikram Garg at Sally Parker's Diamond Head home. You will be dazzled by performances from several of the Mae Orvis Opera Studio singers including Leslie Goldman. Date to be mutually agreed upon by the parties
Vikram Garg
Sally Parker Value: \$5000

609 Downtown Penthouse Dinner for Eight

Private dinner for eight hosted by Shelley and Kelvin in their Grand Penthouse located in town. You will enjoy unlimited champagne and wine paired with a beautiful menu prepared by Chef Ernesto Limcaco. You and your guests will be catered to in style complete with music of your choice, elegant table setting and favors
Kelvin Bloom and Shelley Wilson-Bloom
Chef Ernesto and Elizabeth Watanabe, Burgers and Things Value: Priceless

610 "A Night in Madrid" Dinner for Six

Enjoy a Spanish-themed dinner for six at the home of hosts Steve Prieto and Rich Kennedy. Wine included. Date to be arranged and mutually agreed upon by both parties
Steve Prieto and Rich Kennedy Value: Priceless

611 1010 Dinner for Eight

Dinner for eight in the elegant apartments at 1010 Wilder – cocktails and pupus, main course and desserts prepared by multiple chefs. Date to be arranged and mutually agreed upon by all parties
Susan Palmore
Steve Prieto and Richard Kennedy
Gae Bergquist Trommald Value: \$1500

612 Chef's Elegant Plated Dinner for Eight in Your Home

A Table Hawaii will organize a Chef's Elegant Plated Dinner in your home and create a menu for you. Chef's service by A Table Hawaii. Food cost per menu and all beverages at the Bidder's expense. Blackout dates: 12/15/2016-1/15/2017. Valid until 11/30/17. Minimum two-week prior reservation needed

A Table Hawaii, Chef Aline Steiner, Private Chef

Value: \$1200

613 Dinner for Six by Chef Eric Leterc

Enjoy a four course dinner for six people by Chef Eric Leterc. Food cost per menu and all beverages at the Bidder's expense. Date to be arranged and mutually agreed upon by both parties

Eric Leterc

Value: \$1200

614 Lunch for Four at First Hawaiian Bank Banker's Club

Enjoy fabulous views and cuisine to match at this exclusive location

Law Office of Eric A. Seitz

Value: \$400

615 Lunch, Tour and Museum of Art Membership

One Supporting level membership, lunch for four in the Museum of Art Café, followed by a private half-hour tour of the museum led by Interim Director, Allison Wong

Honolulu Museum of Art

Value: \$250

616 Lunch for Six at Outrigger Canoe Club

Enjoy a hosted luncheon with Elizabeth Lacy for six at a seaside table at the Outrigger Canoe Club

Elizabeth Lacy

Value: \$180

617 Haleakala Skyline Tour

Two people will soar across five ziplines and cross a swinging bridge through towering trees in upcountry Maui for an experience of a lifetime. Must weigh between 60-250 pounds. Must be at least eight-years old

Skyline Eco-Adventures

Value: \$250

618 Golf Outing with Marty at Waialae

Join Marty Fritz for golf for three at Waialae Country Club. Date to be mutually agreed upon by both parties

Marty Fritz

Value: \$400

619 Golf for Three at Waialae Country Club

Join David Reber for 18 holes of golf at Waialae Country Club, site of the Sony Open. Nineteenth hole to follow. Date to be mutually agreed upon by both parties

David Reber

Value: \$325

620 Round of Golf for Three at Waialae Country Club

Join Dr. Philip McNamee for 18 holes of golf at Waialae Country Club. Date to be mutually agreed upon by both parties

Dr. Philip McNamee

Value: \$300

621 Lunch for Five in the Bank of Hawaii Surf Rider Dining Room

Invite your HOT friends to a lunch in the Bank of Hawaii Surf Rider dining room with your host, HOT board member Cori Weston. Lunch includes beverages, appetizer, entrée, dessert and complimentary parking. Lunch date and time is subject to availability

Cori C. Weston

Value: \$250

622 Downtown Penthouse Cocktail Reception for Eight

Private cocktail reception for eight hosted by Shelley and Kelvin in their Grand Penthouse located in town. You will enjoy unlimited champagne and wine paired with cheese and chocolates. You and your guests will be catered to in style complete with music of your choice

Kelvin Bloom and Shelley Wilson-Bloom

Value: Priceless

623 European Football

Experience one of the most popular European soccer clubs in the world - Manchester United. You and a guest will be entertained by the likes of Wayne Rooney, Bastian Schweinsteiger and Juan Mata as you sit in Man Utd's home stadium of Old Trafford. These difficult to get tickets are for home games only and for a mutually agreed upon date

Jonathan Crookall

Value: \$400

624 Chef Mavro Cooking In-Kitchen Cooking Demo

A party of six will go behind-the-scenes of the Five Diamond Chef Mavro restaurant for a special in-kitchen cooking demo & tasting with wine pairing. Chef Mavro will show the secrets of his signature dish, Onaga Baked in a Salt Crust, share entertaining stories and answer your questions about fish cookery! Date to be mutually agreed upon by both parties

Chef Mavro

Value: \$1000

625 Marcia Gay Harden and CODE BLACK

Marcia Gay Harden is pleased to extend a set visit for two for the filming of CBS's CODE BLACK, to include a personal tour of the set and a private lunch with Ms. Harden. Individuals under the age of 18 must be accompanied by an adult. In the event that CODE BLACK is made unavailable by the network, Ms. Harden shall extend an invitation for a lovely private lunch in Beverly Hills at a mutually agreeable time and location.

Marcia Gay Harden

Value: Priceless

- 701 *Endless Summer* by John Van Hammersveld**
Endless Summer limited edition signed and numbered original serigraph by John Van Hammersveld
Jim Salter Value: \$10,000
- 702 *Moulin Rouge* by Guy Buffet**
Moulin Rouge, limited edition framed print by Guy Buffet
Karen and Mark Polivka Value: \$500
- 703 *Cloisonné Ginger Jars***
A pair of Cloisonné ginger jars, black with flowers
Lori and Jaymark Komer Value: \$150
- 704 *On the Bay* by Brenda Cablayan**
An original acrylic on canvas painting by Brenda Cablayan, is titled *On the Bay*
Reverend and Mrs. Raymond Woo Value: \$4000
- 705 *Original Thai Painting***
This framed painting from Thailand depicts a gracious Thai lady with flower garlands
Reverend and Mrs. Raymond Woo Value: \$2500
- 706 *Waterford Candlesticks***
Waterford candlesticks, Lismore pattern
Keith Kalway Value: \$100
- 707 *Annie Leibovitz Poster***
Matted and framed poster by Annie Liebovitz of Keith Haring, circa 1980s
Anonymous Value: \$250
- 708 *Dodge La Epc Silver Plated Serving Bowls***
A pair of modern Victorian silver-plated, large shell serving bowls
Manufactured by Dodge La Epc
Joan and Perry White Value: \$150
- 709 *Anthurium* by Arthur Shimamura**
Photograph, mounted and matted, 11 x 14
Arthur Shimamura Value: \$200

710 Four 17th Century Prints

Three prints by Jacques Callot (1592-1635), framed together. One framed print of Commedia dell'arte figures in the style of Callot

Helen Ettlinger

Value: \$1600

711 English Royal Crown Derby Teacups

Set of twelve vintage English Royal Crown Derby teacups

Anonymous

Value: \$400

712 Framed Lithograph

This beautiful piece of a Hawaiian man with a calabash is by Douglas P. Tolentino

Tolentino

Reverend and Mrs. Raymond Woo

Value: \$2000

713 Waterlilies by Judith Perry

Framed oil painting

Judith A. Perry

Value: \$1200

714 Vase

Hand-blown art glass vase

Lori and Jaymark Komer

Value: \$75

715 Daum Wine Glasses

Set of twelve, Daum handblown crystal wine glasses

Lori and Jaymark Komer

Value: \$300

716 Blue and White China

Set of ten dinner and salad plates from Neiman Marcus

Sarah Richards

Value: \$400

717 Boiling Pots by Steve and Jim Kastner

Boiling Pots, framed photograph

Kastner Design Associates

Value: \$1050

718 Crystal Candlesticks

Val St. Lambert crystal candlesticks

Anonymous

Value: \$150

719 Rainforest

A beautiful arrangement to take home and a \$150 gift card for future use

Michael Miyashiro, Rainforest at Kilohana Square

Value: \$300

- 720 Bronze Deer**
Pair of 1920s Japanese export bronze deer
Margaret Armstrong Value: \$300
- 721 Porcelain Pitcher**
Porcelain pitcher by Margaret Realica
Phyllis Corteway Value: \$85
- 722 Waterford Crystal Vase**
Footed Waterford crystal vase 8 ½ inches
Anonymous Value: \$130
- 723 Malcolm Wright Pottery Bowl**
Malcolm Wright pottery bowl, a gift to the Watumulls from the governor of North Dakota
Indru and Gulab Watumull Value: \$160
- 724 Neiman Marcus Highball Glasses**
Set of four Neiman Marcus highball glasses
Anonymous Value: \$50
- 725 Barbers Point, Oahu by Arthur Shimamura**
Photograph, mounted and matted, 11 x 14
Arthur Shimamura Value: \$200
- 726 Twisted Trunk by Steve and Jim Kastner**
Twisted Trunk, framed photograph
Kastner Design Associates Value: \$550
- 727 Kansai Yamamoto Plates**
Two sets of five plates measuring six inches in diameter by Kansai Yamamoto
Indru and Gulab Watumull Value: \$260
- 728 Tiffany & Co. Crystal Football**
Tiffany crystal football
Indru and Gulab Watumull Value: \$95
- 729 Mikasa Vase**
Mikasa Cut Crystal Vase
Lori and Jaymark Komer Value: \$50

730 Under Bright Sun by Yasako Abeshima

Watercolor

Yasako Abeshima

Value: \$450

731 On the Grand Canal, #2 by Roger Whitlock

Watercolor

Roger Whitlock

Value: \$950

732 Verdi Mask

This stunning ceramic mask of Verdi, circa 1850 when he was 37-38 years old was a limited-edition reproduction made in 1870 in Faenza, Italy

Maestro Tim Shaindlin

Value: \$750

733 Art Glass

Satava Art Glass Studio Moon Jellyfish

Anonymous

Value: \$800

734 Crystal Fleurology Orchid

A stunning glass orchid flower by Waterford Crystal

Anonymous

Value: \$75

735 “OHI” Book and Workshop**Godiva 90th Anniversary Truffles**

Newly released book “OHI: Gathering and Arranging Hawaii’s Flora” and a gift certificate to a workshop of your choice at Paiko, Honolulu’s botanical boutique. 18-piece truffle assortment

*Paiko**Godiva*

Value: \$115

801 Sterling Liqueur glasses

Eleven sterling liqueur glasses by Preisner

Margaret Armstrong

Value: \$175

802 Sterling Salt and Pepper Shakers

Reed and Barton Francis I sterling salt and pepper shakers

Margaret Armstrong

Value: \$125

803 Covered Serving Bowl

Twelve-inch Wallace covered serving bowl, silver plate

Margaret Armstrong

Value: \$100

804 Reed & Barton Dishes

Mayflower oval bowl and Chippendale fluted dish, silver plate

Margaret Armstrong

Value: \$100

805 Sterling Sugar and Cream

English 19th century sterling silver sugar and creamer

Margaret Armstrong

Value: \$300

806 Three Paul Revere Bowls

Paul Revere bowls, 3 ½-inch International Sterling, 5-inch Preisner sterling, 5 ¾-inch silver plate

Margaret Armstrong

Value: \$75

807 Sterling Silver Bowl with Leaf Border

Gorham shallow sterling silver bowl with leaf border

Margaret Armstrong

Value: \$250

808 Trivet

Glass and silver trivet

Margaret Armstrong

Value: \$75

809 Sterling Nut Dishes

Set of six Gorham sterling silver nut dishes with scalloped edge

Margaret Armstrong

Value: \$150

810 Sterling Nut Dishes

Set of twelve Gorham sterling silver oval nut dishes

Margaret Armstrong

Value: \$200

811 Tray with Raised Beaded Edge

Silver plate footed tray with a raised beaded edge to decorate your dressing table

Margaret Armstrong

Value: \$125

812 Gravy Boat

Silver plate footed gravy boat and tray

Margaret Armstrong

Value: \$80

813 Presentation Piece

Silver plated covered presentation piece

Margaret Armstrong

Value: \$500

814 Reed & Barton Sterling Bowl

Reed & Barton oval sterling bowl

Margaret Armstrong

Value: \$300

815 Reed & Barton Sterling Bowl

Reed & Barton sterling square bowl with scalloped edge

Margaret Armstrong

Value: \$350

816 S. Kirk Sterling Bowl

S. Kirk small footed sterling bowl

Margaret Armstrong

Value: \$75

817 Gorham Sterling Tray

1920s Gorham sterling footed tray

Margaret Armstrong

Value: \$275

818 Sterling Sauceboat

1950s Revere sterling silver sauceboat and tray

Margaret Armstrong

Value: \$100

819 Pair of Matched Silver Bowls

Barbour pair of nickel silver bowls

Margaret Armstrong

Value: \$200

- 820 Butter Dish**
Crescent silver plate butter dish with liner
Margaret Armstrong Value: \$75
- 821 Assorted serving pieces**
Gorham Valence Ford cheese spoon. Two sterling ladles and a small tray
Margaret Armstrong Value: \$75
- 822 Towel Sterling Spoons**
Two Towel sterling spoons in the Diana pattern. The sugar shell is dated on the back November 30, 1891, the other is a more modern piece
Margaret Armstrong Value: \$75
- 823 Carving Set**
Gorham sterling meat fork and knife. Made prior to 1950s
Margaret Armstrong Value: \$70
- 824 Sterling Silver Tray**
Gorham sterling tray. Made post 1950
Margaret Armstrong Value: \$250
- 825 Reed & Barton Jigger**
Reed & Barton sterling silver jigger
Margaret Armstrong Value: \$200

DINING

901 **Vino's Italian Tapas**

A Taste of VINO with dinner for four, includes four courses with dessert by Chef Keith Endo, with wine pairings by Chuck Furuya. Gratuity is not included. Reservations must be made in advance on a date to be mutually agreed upon. Valid through May 31, 2017

Vino's Italian Tapas

Value: \$300

902 **MW Restaurant**

\$250 gift card to MW Restaurant

Donna Walden

Value: \$250

903 **Ruth's Chris Steak House**

\$200 gift card for Ruth's Chris Steak House

Ruth's Chris Steak House

Value: \$200

904 **Tango Contemporary Café**

Dinner for two to the "TTT Wine Dinner" of your choice. Certificate for a four course dinner paired with a minimum of four wines featuring Chef Goran Streng's cuisine extraordinaire. Expires September 30, 2017. Subject to space availability. Not valid in December. Gratuity not included

Tango Contemporary Café

Value: up to \$200

905 **Asia Manoa**

Meet with 2nd generation restaurateur and owner of Asia Manoa to plan a special event. Choose banquet or just enjoy a multitude of good meals

Clifford and Adrienne Lau

Value: \$200

906 **Wolfgang's Steakhouse**

\$200 gift certificate for Wolfgang's Steakhouse

Wolfgang's Steakhouse

Value: \$200

907 **Il Lupino Trattoria and Wine Bar**

\$200 gift certificate for Il Lupino Trattoria and Wine Bar

Il Lupino Trattoria and Wine Bar

Value: \$200

908 **Hale Vietnam**

\$200 gift certificate for Hale Vietnam

Hale Vietnam

Value: \$200

909 Bar Leather Apron

A cocktail experience with light bites for four at Bar Leather Apron

Bar Leather Apron

Value: \$200

910 Le Bistro

Two \$100 gift certificates for Le Bistro

Le Bistro

Value: \$200

911 Michel's at the Colony Surf

Two \$100 gift certificates for Michel's at the Colony Surf

Michel's at the Colony Surf

Value: \$200

912 Nobu Waikiki

\$200 gift certificate for Nobu Waikiki. Valid until 9/30/17

Nobu Waikiki

Value: \$200

913 Halekulani's Coconut Cake

Halekulani's signature coconut cake ¼ sheet

Halekulani Corporation

Value: \$200

914 Asia Manoa

Meet with 2nd generation restaurateur and owner of Asia Manoa to plan a special event. Choose banquet or just enjoy a multitude of good meals

Clifford and Adrienne Lau

Value: \$150

915 Cherye's Cheesecake

Three cheesecakes, one at a time or all together. Date to be mutually agreed upon, with at least forty-eight-hours notice

Cherye Pierce

Value: \$150

916 Angelo Pietro

\$150 gift card for Angelo Pietro

Donna Walden

Value: \$150

917 HASR Bistro

\$150 gift card for HASR Bistro

Donna Walden

Value: \$150

918 Olive Tree Café

Dinner for four certificate includes four main dish, four appetizers, four drinks and four desserts. Valid for six months

Olive Tree Café

Value: \$109

- 919 Fendu Boulangerie**
Enjoy gourmet breads, pizzas, sandwiches and other delicious treats at Fendu Boulangerie in Manoa
Clifford and Adrienne Lau Value: \$100
- 920 The Manifest Coffee House & Cocktail Bar**
\$100 gift certificate to The Manifest Coffee House & Cocktail Bar
The Manifest Coffee House & Cocktail Bar Value: \$100
- 921 Grondin French-Latin Kitchen**
\$100 gift certificate for Grondin French-Latin Kitchen
Grondin French-Latin Kitchen Value: \$100
- 922 JJ Dolans**
\$100 gift certificate for JJ Dolans
JJ Dolans Value: \$100
- 923 Downbeat Diner and Lounge**
\$100 gift certificate for Downbeat Diner and Lounge
Downbeat Diner and Lounge Value: \$100
- 924 Longhi's Ko Olina**
\$100 gift certificate for Longhi's Ko Olina
Longhi's Ko Olina Value: \$100
- 925 Roy's Waikiki**
Gift certificate for dinner for two at Roy's Waikiki. This certificate is redeemable towards food only and does not include alcohol, beverages, tax and gratuity. No takeout orders and not valid for special events and holidays. Reservations required
Roy's Restaurants Value: \$100
- 926 Sansei Seafood Restaurant & Sushi Bar**
\$100 gift certificate for Sansei Seafood Restaurant & Sushi Bar
Sansei Seafood Restaurant & Sushi Bar Value: \$100
- 927 Spanish Specialty Basket**
Assorted items with a Spanish theme
Gourmet Foods Hawaii Value: \$100

- 928 Chef Chai's**
Dinner for two with gift certificate up to \$100
Chef Chai's Value: \$100
- 929 Bernini Honolulu**
Two \$50 gift certificates to Bernini Honolulu
Bernini Honolulu Value: \$100
- 930 Wasabi Bistro**
Two \$50 gift certificates to Wasabi Bistro
Wasabi Bistro Value: \$100
- 931 Wasabi Bistro**
Two \$50 gift certificates to Wasabi Bistro
Wasabi Bistro Value: \$100
- 932 hank's haute dogs**
\$100 gift certificate for hank's haute dogs. Your ticket to haute dog happiness
hank's haute dogs Value: \$100
- 933 Baci Bistro**
\$100 gift certificate for Baci Bistro
Baci Bistro Value: \$100
- 934 Taverna Restaurant, Maui**
\$100 gift certificate for Taverna Restaurant in Kapalua, Maui
Taverna Restaurant Value: \$100
- 935 Café Kaila**
Four \$25 gift certificates. Valid until 11/31/17
Café Kaila Value: \$100
- 936 Café Kaila**
Three \$25 gift certificates. Valid until 11/31/17
Café Kaila Value: \$75
- 937 Café Kaila**
Three \$25 gift certificates. Valid until 11/31/17
Café Kaila Value: \$75

- 938 Livestock Tavern and Tchin Tchin**
 \$50 gift certificate for Livestock Tavern and \$50 gift certificate for Tchin Tchin
Livestock Tavern
Tchin Tchin Value: \$100
- 939 Buzz's Gift Bag**
 Two \$25 gift cards, Buzz's towel and greeting cards
Buzz's Original Steak House Value: \$85
- 940 Lucky Belly**
 \$50 gift certificate for Lucky Belly
Lucky Belly Value: \$50
- 941 12th Avenue Grill**
 \$50 gift card. Not applicable for special events, private dining, catering, tax or gratuity
12th Avenue Grill Value: \$50
- 942 Diamond Head Market and Grill**
 Two \$25 gift certificates to Diamond Head Market and Grill
Diamond Head Market and Grill Value: \$50
- 943 Cactus**
 Chef's luncheon for two
Cactus Value: \$250
- 944 Haute Confectionary Boutique Basket**
 Gift basket filled with assorted cookies and pastries
Haute Confectionary Boutique Value: \$150
- 945 Mahina & Sun's**
 \$100 gift certificate for Mahina & Sun's
Mahina & Sun's Value: \$100

ADORNMENTS

1001 Verdi Collection

Gift basket of luxury facial products from the “Verdi” line of Love Renaissance cosmetics

Love Renaissance

Value: \$1200

1002 Perfect Panama

Classic summer hat hand woven in Ecuador. Size 56 cm

Truffaux Panama Hatmakers

Value: \$170

1003 Lau Hala Baseball Cap

Hand woven Lau Hala “Baseball Cap” with nalu blocking created especially for HOT Opera Ball by master weaver Margaret Lovett of Kauai

Margaret Lovett

Value: \$450

1004 Lau Hala Hat

Hand made Lau Hala hat woven especially for HOT Opera Ball by HOT Board Member Steve Prieto

Steve Prieto

Value: \$350

1005 Sorial Handbag

Faux snakeskin handbag

Riches Kahala

Value: \$175

1006 Magnolia Gift Basket

Gift basket filled with perfume, body lotion, bath salts and various other fragrant items

Magnolia

Value: \$200

1007 Beach Perfect

Paradisus sterling silver ulu earrings, “Le Voyage en Panier” woven bag and Mary Sol straw hat

Riches Kahala

Value \$328

1008 Silk Kimono & Scarf

Kimono and scarf is from the collection of iconic silk prints of wearable art. One size fits most

Tapestries by Hauoli

Value: \$135

1101 **Blue Note Hawaii**

Two complimentary admission vouchers. Each voucher good for two loge seats to a show at Blue Note Hawaii. Blackout dates and some restrictions apply. \$10 club policy minimum per person applies. Reservation required
Blue Note Hawaii Value: \$200

1102 **Diamond Head Theatre**

Four tickets to any performance in the 2016-2017 season
Diamond Head Theatre Value: \$140

1103 **Hawaii International Film Festival**

Two flash passes for the 2017 Spring Showcase in April. The HIFF Flash Pass allows the movie lover to watch unlimited films with no tickets required and priority seating
Hawaii International Film Festival Value: \$500

1104 **Kumu Kahua Theatre**

Ten tickets for any show in the 46th season, 2016-2017
Kumu Kahua Theatre Value: \$150

1105 **Chamber Music Hawaii**

Choose pairs of tickets for any four concerts this season
Chamber Music Hawaii Value: \$300

1106 **Honolulu Chamber Music Society 2016-2017 Season**

Two tickets to each of the following concerts at Orvis Auditorium: Dover String Quartet (11/20); Garrick Ohlson, Pianist (1/28); Eroica Trio (2/11); Camarata RCO (3/24)
Honolulu Chamber Music Society Value: \$380

1107 **Ballet Hawaii**

Four tickets to see the brand new Royal Nutcracker 2016 on December 16, a unique Hawaiian adaptation set at Washington Place in 1858
Ballet Hawaii Value: \$320

1108 **Honolulu Theatre for Youth**

Family ticket package for two adults and two youth for one show. Based on space availability. Valid until May 2017
Honolulu Theatre for Youth Value: \$60

1109 Pacific Aviation Museum Pearl Harbor

Four guest passes with Aviator's Tour, four complimentary simulator flights and two car magnets

Pacific Aviation Museum Pearl Harbor

Value: \$182

1110 Bishop Museum

Dual/Family membership at Bishop Museum

Bishop Museum

Value: \$110

1111 Consolidated Theatres

Four movie passes. \$1.50 service charge plus any additional 3D or Titan XC premium fee may apply when applicable. Not valid for opening 2 weeks of a new movie

Consolidated Theatres

Value: \$40

1112 A Piece of Opera History

Framed commemorative program from the inaugural performance of Antony and Cleopatra at the Metropolitan Opera House at Lincoln Center on September 16, 1966, mounted on Japanese silk

Anonymous

Value: Priceless

1113 Hawaii Opera Theatre

Two premium tickets for "A Street Car Named Desire" on January 27, 29 or 31, 2017

Hawaii Opera Theatre

Value: \$260

1114 Hawaii Opera Theatre

Two premium tickets for "The Tales of Hoffman" on April 21, 23 or 25, 2017

Hawaii Opera Theatre

Value: \$260

1115 Hawaii Opera Theatre

Two premium tickets for "Three Decembers" on March 24, 25 or 26, 2017

Hawaii Opera Theatre

Value: \$180

1116 Hawaii Opera Theatre

Two premium tickets for "Sol3 Mio" on January 28, 2017

Hawaii Opera Theatre

Value: \$190

SERVICES

1201 Honolulu Star-Advertiser

Gift certificate redeemable for one full-page full-color print ad in the daily Honolulu Star-Advertiser. Buy this for your business or donate it to your favorite charity

Honolulu Star-Advertiser

Value: \$20,760

1202 Twelve Week Transform Program

Twelve weeks of unlimited Cross Fit, nutrition coaching, accountability, community support, body measurements, before and after photos, celebration party and guaranteed results

Keoni and Rose Subiono

Cross Fit East Oahu

Value: \$1200

1203 Sapp Fitness Training

Twelve workout sessions in one month with Mike Sapp or one of his expert trainers. Only new clients are eligible

Mike Sapp Fitness

Value: \$1080

1204 Sapp Fitness Training

Twelve workout sessions in one month with Mike Sapp or one of his expert trainers. Only new clients are eligible

Mike Sapp Fitness

Value: \$1080

1205 Leahi Swim School

Gift certificate for ten class swim lessons, swim bag, goggles, poncho, beach towel, dive rings and dive sticks

Leahi Swim School

Value: \$250

1206 Haku Lei by Ann Kadowaki

Five haku lei, all at once or individually. At least two-weeks notice is required and note blackout dates: 4/18-4/25 and 5/27-6/4

Ann Kadowaki

Value: \$200

1207 Bradley and Lily Stationery

Bradley and Lily letterpress, foil pressed and offset printed cards. All designed and printed in Honolulu on 100% recycled papers

Bradley and Lily

Value: \$200

1208 Market City

Seven \$20 Market City Shopping Center gift certificates

Market City Limited

Value: \$140

1209 Lucky Dog Basket

\$85 adoption certificate and gift basket

Hawaiian Humane Society

Value: \$125

1210 Island Mobile Vet

A pet basket including \$100 gift certificate to Island Mobile Vet

Island Mobile Vet, Inc.

Value: \$100

1211 Simply Organized

Two \$50 gift certificates to Simply Organized

City Mill Company, Ltd.

Value: \$100

1212 Piano Lesson by Stephen Strugnell

Two lessons with one of Hawaii's most experienced piano teachers. For anyone between the ages of 5 to 100

Stephen Strugnell

Value: \$150

1213 Tennis with Ryan Lee

A ninety-minute private tennis lesson at any level with tennis pro

Ryan Lee. Valid until 12/31/17

Ryan Lee

Value: \$150

1214 Marie Louise Cleaners

\$100 gift certificate to use at their new location on 331 Kamani Street

Marie Louise Cleaners

Value: \$100

1215 The Paperie

\$100 gift certificate

The Paperie

Value: \$100

1216 Facial and Tea

First a facial at Ku'uleilani Day Spa and then a relaxing afternoon tea for two

Tea at 1024

Christine & Benjamin Komer

Value: \$95

CHRISTMAS

1301 “Dream to Fly” A Pittosporum Branch Wreath

You can enjoy this wreath for many, many holiday seasons. The process to preserve the branch is tedious, requiring that each branch is dried, the bark stripped and a double coat of paint applied. The design is Sogetsu inspired

Joyce Tomonari

Value: \$450

1302 Berry Christmas Tree

5' Berry Bear Christmas Tree

C.S. Wo Gallery

Value: \$642

1303 Mr. Christmas 1939 World's Fair Ferris Wheel

Inspired by the 1939 New York World's Fair, this animated ferris wheel by Mr. Christmas includes chrome details and color morphing neon spokes.

Plays 25 Christmas carols and 25 year-round classics

RitzyDecor.com

Value: \$260

1304 Woodland Christmas Tree

Lighted three-foot tree decorated with handmade birds in crocheted hats...snowmen...woodland critters...and more

Janet Weyenberg and Heather Chun

Value: \$400

1305 Anne's Haute Couture Christmas Tree

Decorate for the holidays in true fashion. Anne Namba has designed a Haute Couture table top Christmas tree for you

Anne Namba Designs

Value: \$350

1306 Holly and Berry Christmas Decorations

Set of three holly and berry Christmas decorations

Anonymous

Value: \$50

1307 Christmas Birdhouse

Three tiered “condo” decked out for Christmas with composition birds, Royal Palm, cotton batting, wood ornaments, paint and glitter

Janet Weyenberg

Value: \$350

1308 Wentworth Wooden Santa Jigsaw Puzzle

500 piece Wentworth wooden jigsaw puzzle. “Klimt Santa”

Lori and Jaymark Komer

Value: \$95

1309 Glitter Galore Tree

Gold glitter 37" tree filled with glass ornaments, garlands & other delights to add an elegant sparkle to your tree

Janet Weyenberg and Heather Chun

Value: \$400

1310 Decadently Gold

Tabletop Christmas tree adorned in lights and glittery gold ornaments and ribbon

Anonymous

Value: \$200

1311 Halekulani Christmas

Three-foot tabletop Christmas tree designed by the floral department at the Halekulani Hotel

Halekulani Hotel

Value: \$350

1312 Christmas by Mokai

Three-foot lighted tabletop Christmas tree created by freelance designer

Mokai Chang

Mokai Chang

Value: \$350

1313 Rustic Santa

Santa seated in a rocker

Anonymous

Value: \$50

ACKNOWLEDGMENTS

Opera Ball 2016 gratefully acknowledges and thanks:

Allison Higa Design

Aki Anderson, Account Director – Catering & Sales
and the Sheraton Waikiki Staff

Andis Wines

Andres Harnisch Brokerage, Inc.

C.S. Wo & Sons

Darrell & Cathy Lee

Jeri Lynch

Ned Mobley

Neiman Marcus

Onward Creative

Rai Saint Chu & Richard Turbin

Kelly Sanders, Area Managing Director, Starwood Hotels & Resorts

Wilson Care Group

Buzz & Kitty Wo

We also gratefully acknowledge all donors and supporters who
we were not able to list in our program due to print deadlines.

We will represent your support in the next opera program.

HOT BOARD OF DIRECTORS

PRESIDENT

James H. McCoy

VICE PRESIDENTS

Karen Char

Lynne Johnson

Keith Kalway

James Lally

Evelyn B. Lance

Christine O'Brien

Richard C. Palma

Jeff Pauker

Nigel Pentland

Steven Prieto

Jacqueline Yee Reber

Sarah M. Richards

Jean E. Rolles

Stephen H. Turner

Cori Ching Weston

Adrienne Wing, M.D.

SECRETARY

Linn Sol Alber

TREASURER

Leighton J. Yuen

CO-COUNSEL

Robert B. Bunn, Esq.

Robert S. Katz, Esq.

DIRECTORS

Margaret B. Armstrong

Gail Atwater

Nanna Bradford

Sherry Broder

Frances "Patsy" B. Bunn

Pamela Andelin Cameron

Annie Chan

Leonard Chow

Marilyn "Lyn" B. Clarkin

Kasumi Hara

Thomas P. Huber

Flora R. Kawasjee

Ralph Kiessling

Floria "Lori" Komer

James T. Leavitt, Esq.

Luanna McKenney

Philip I. McNamee, M.D.

Ada Mei

Linda Nelson

Thuy Nguyen-Martines

Norma Nichols, Ph.D.

Sally Parker

Cherye Pierce

Gregory E. Ratté

Aggreneva "Neva" Rego

Marrie Schaefer

David Y. Takagi

James K. Tam, Esq.

Marilyn Trankle

Maggie S. Walker

Carolyn A. Berry Wilson

Shelley Wilson

OPERA BALL 2016 COMMITTEE

Chair

Shelley Wilson

Silent Auction Co-Chairs

Juli Seitz Henning

Cherye Pierce

Committee

Martha Balkin	Evelyn Lance
Philana Bouvier	Darrell Lee
Meghan Goldman Buck	Catherine Lin
Pam Andelin Cameron	Jeri Lynch
Christine Carungi	Kimi Matar
Karen Char	Leslie Goldman McInerney
Jay Chen	Luanna McKenney
Leonard Chow	Susan Palmore
Heather Chun	Steve Prieto
Jason Cutinella	Sarah Richards
DJ Dole	Michelle Richardson
Lisa Dudgeon	Peter Shaindlin
Elizabeth Grossman	James Tam
Keith Kalway	Steve Turner
Flora Kwasjee	Donna Walden
Richard Kennedy	Maggie Walker
Travis Knott	Cori Weston
Maile Koga	Janet Weyenberg
Christine Komer	Adrienne Wing
Lori Komer	Buzz Wo
Elizabeth Lacy	Leighton Yuen

HOT STAFF

Henry G. Akina
Artistic Director

Simon Crookall
General Director

Courtney Coston
Office Assistant

Nikki Nielsen
Assistant Box Office Manager

Beebe Freitas
Head of Music

Sue Ruiz
Director of Finance & Administration

Erik D. Haines
Director of Education

Jordan Sasaki
Production Coordinator

Barett Hoover
Director of Artistic Administration

Eric Schank
Education Assistant

Tracy Jefferson Chavez
Director of Individual Giving

T.H. Stettler
Director of Production

Blythe Kelsey
Education Coordinator

Jason Walter
Marketing Director

Allison Kronberg
Marketing Assistant

Gayleen Williams
Box Office Manager